

HARTEX 
Play Hard. Play Smart.



**RIDE
LIMITLESS.
EXPLORE
BOUNDLESS.**

CONTENTS

| | |
|---------------------------------|-----------|
| LEGACY | 04 |
| GLOBAL PRESENCE | 05 |
| ESG & SUSTAINABILITY | 06 |
| TECHNOLOGY | 07 |
| TYRES | 08 |
| MOTORCYCLE | 10 |
| SCOOTER | 23 |
| 3 WHEELER | 28 |
| CERTIFICATIONS | 38 |

LEGACY

60 YEARS OF TRUST
GLOBAL REACH
PROVEN PERFORMANCE

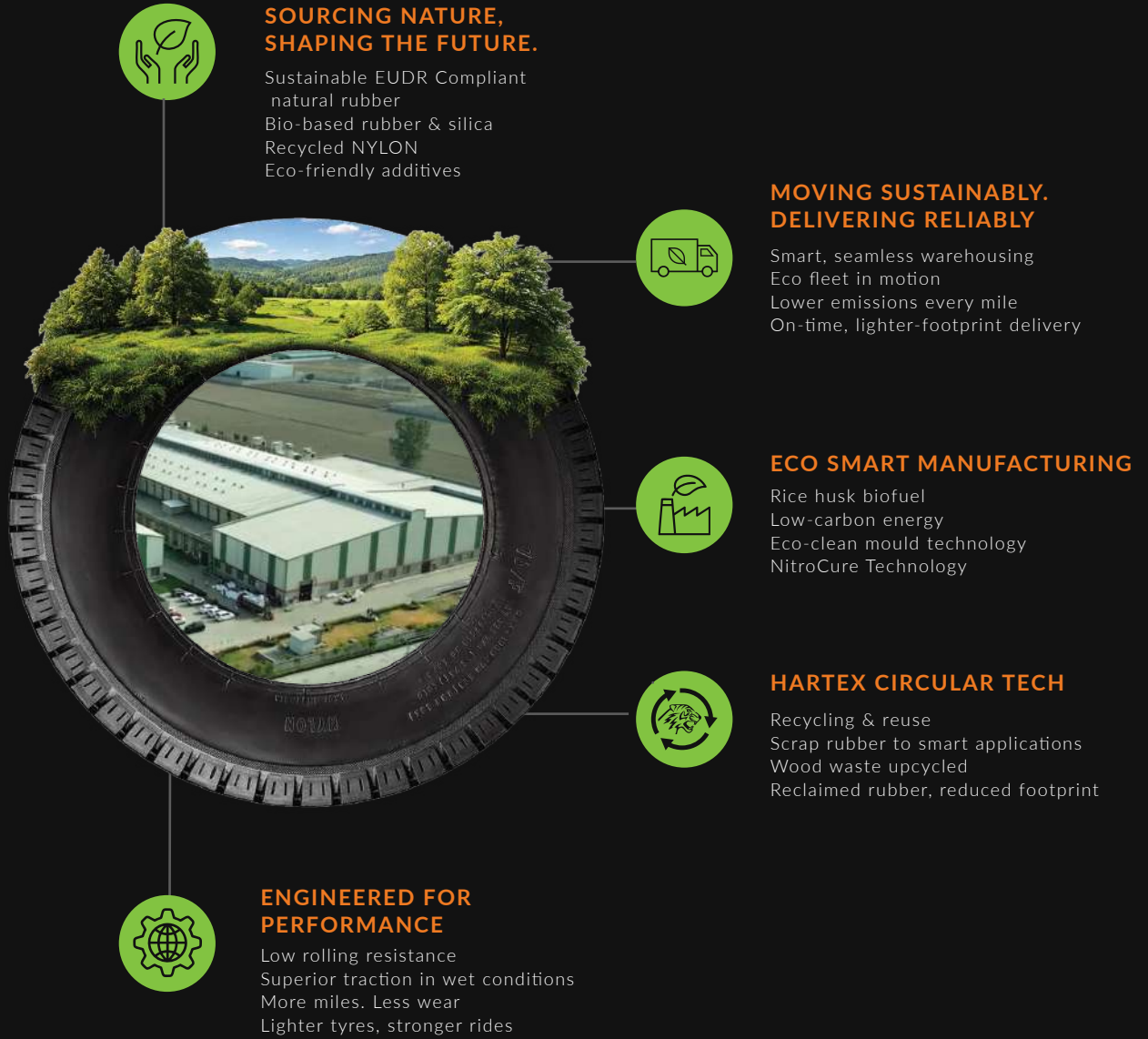


GLOBAL PRESENCE



ESG & SUSTAINABILITY

MOTORING TOWARDS ENDLESS POSSIBILITY - RESPONSIBLY



1MW Solar – powering our future



Water recycled – nothing wasted



Zero Liquid Discharge – zero compromise



Repurposed tubes – zero waste



Dry Ice Cleaning – zero chemicals, total precision



Wood waste – reimagined as furniture



NitroCure – smarter, greener tyre curing

TECHNOLOGY



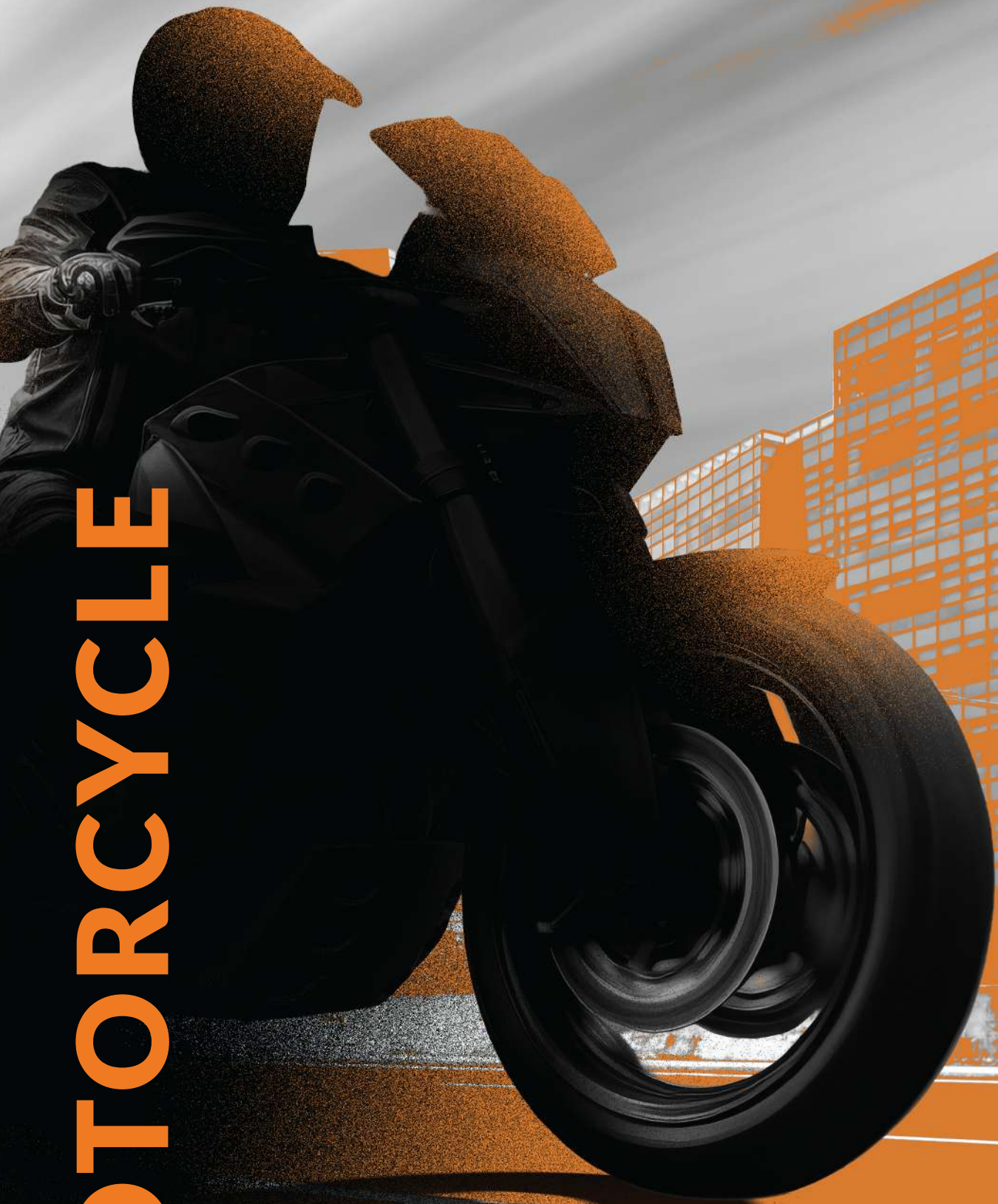
TYRES BY SIZE / CATEGORY

| SL NO. | PATTERN NAME | TYRE SIZES |
|--------|--------------|------------------------------------------------------------------------------------------------------------------------------------------------------------------------------------------------------------------------------------------------------------------------------------------------------------------------------------|
| 1 | RIBSTER | 2.75-17, 4PR, 41P, TUBE TYPE |
| 2 | ARC | <ul style="list-style-type: none"> 90/100-10, 53J, TUBELESS 90/90-12, 54J, TUBELESS 2.75-17, 4PR, 41P, TUBELESS / TUBE TYPE 2.75-18, 4PR, 42P, TUBELESS / TUBE TYPE 80/100-17, 46P, TUBELESS 80/100-18, 47P, TUBELESS |
| 3 | GLIDE | <ul style="list-style-type: none"> 90/90-17, 49P, TUBELESS 100/80-17, 52P, TUBELESS 110/70-17, 54S, TUBELESS 90/90-18, 51P, TUBELESS 90/90-19, 52P, TUBELESS 100/90-19, 57P, TUBELESS |
| 4 | PRO GRIP | <ul style="list-style-type: none"> 2.75-18, 6PR, 48P, TUBELESS / TUBE TYPE 3.00-17, 6PR, 50P, TUBELESS 3.00-18, 6PR, 52P, TUBELESS 80/100-17, 53P, TUBELESS 80/100-18, 54P, TUBELESS 100/90-17, 55P, TUBELESS 100/90-18, 56P, TUBELESS |
| 5 | GRIPSTER | <ul style="list-style-type: none"> 2.50-16, 6PR, 41L, TUBE TYPE 2.75-18, 6PR, 48P, TUBE TYPE 3.00-18, 6PR, 52P, TUBE TYPE |
| 6 | TUFFSTER | <ul style="list-style-type: none"> 3.00-17, 6PR, 50P, TUBE TYPE 3.00-18, 6PR, 52P, TUBE TYPE |
| 7 | RUFFSTER | <ul style="list-style-type: none"> 90/100-10, 53J, TUBELESS 90/90-12, 54J, TUBELESS 3.00-17, 6PR, 50P, TUBELESS / TUBE TYPE 80/100-17, 53P, TUBELESS 3.00-18, 6PR, 52P, TUBELESS / TUBE TYPE 2.75-18, 6PR, 48P, TUBELESS / TUBE TYPE 80/100-18, 54P, TUBELESS |

TYRES BY SIZE / CATEGORY

| SL NO. | PATTERN NAME | TYRE SIZES |
|--------|--------------|------------------------------------------------------------------------------------------------------------------------------------------------------------------------------------------|
| 8 | ECO GRIP R1 | 80/100-17, 53P, TUBELESS |
| 9 | ECO GRIP R2 | 80/100-18, 54P, TUBELESS |
| 10 | ECO GRIP R3 | 120/80-17, 61P, TUBELESS |
| 11 | ECO GRIP R4 | <ul style="list-style-type: none"> • 110/90-16, 59P, TUBELESS • 120/80-18, 62P, TUBELESS |
| 12 | PULS-E | 3.00-10, 4PR, 42J, TUBELESS |
| 13 | SENS-E | <ul style="list-style-type: none"> • 90/100-10, 53J, TUBELESS • 90/90-12, 54J, TUBELESS |
| 14 | ARC XL | <ul style="list-style-type: none"> • 120/70-10, 54L, TUBELESS • 100/80-12, 56L, TUBELESS • 110/80-12, 61L, TUBELESS • 110/80-17, 57P, TUBELESS |
| 15 | DRIV-E | <ul style="list-style-type: none"> • 90/90-12, 64B, TUBE TYPE • 3.75-12, 4PR, 66E, TUBE TYPE |
| 16 | GRIPSTER + | 3.75-12, 6PR, 72E, TUBELESS / TUBE TYPE |
| 17 | LOADSTER | 3.25-16, 4 & 6PR, 53/60E, TUBELESS / TUBE TYPE |
| 18 | MILE RIB | <ul style="list-style-type: none"> • 4.00-8, 6PR, 76F, TUBE TYPE • 4.00-10, 6PR, 79F, TUBE TYPE |
| 19 | MILE SL | 4.00-8, 6PR, 76F, TUBE TYPE |
| 20 | MILE LUG | 4.00-8, 6PR, 76F, TUBE TYPE |

MOTORCYCLE





RIBSTER

M/C FRONT

TYRE SIZES

2.75-17 4PR 41P TUBE TYPE



Riding Rib Tread Elements -
Enhanced stability & water channeling



Extended Shoulder Design -
Better cornering



Optimised Crown Radius -
Stable straight-line riding and
predictable handling



**High Abrasion & Cut-Crack
Resistant Compound** -
Longer tyre life in all weather





ARC

M/C FRONT

TYRE SIZES

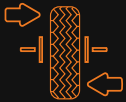
| | | | |
|-----------|-----|----------|--------------------|
| 2.75-17 | 4PR | 41P | TUBE TYPE/TUBELESS |
| 2.75-18 | 4PR | 42P | TUBE TYPE/TUBELESS |
| 80/100-17 | 46P | TUBELESS | |
| 80/100-18 | 47P | TUBELESS | |



Directional Tread with Water Channels – Improved wet grip and safer braking in rain



Optimised Crown Radius – Stable straight-line riding and predictable handling



Extended Shoulder Design – Improved cornering confidence and edge grip



High Abrasion & Cut-Crack Resistant Compound – Longer tyre life in all weather





GLIDE

M/C FRONT

TYRE SIZES

| | | |
|-----------|-----|----------|
| 90/90-17 | 49P | TUBELESS |
| 90/90-18 | 51P | TUBELESS |
| 90/90-19 | 52P | TUBELESS |
| 100/80-17 | 52P | TUBELESS |
| 100/90-19 | 57P | TUBELESS |
| 110/70-17 | 54S | TUBELESS |



Directional Tread with Water Channels –
Improved wet grip and safer braking in rain



Optimised Crown Radius –
Stable straight-line riding and
predictable handling



Even Pressure Distribution –
Uniform wear and smoother
ride quality



**High Abrasion & Cut-Crack
Resistant Compound** – Longer
tyre life in all weather





PRO GRIP

M/C REAR

TYRE SIZES

| | | | |
|-----------|-----|----------|----------------------|
| 2.75-18 | 6PR | 48P | TUBE TYPE / TUBELESS |
| 3.00-17 | 6PR | 50P | TUBELESS |
| 3.00-18 | 6PR | 52P | TUBELESS |
| 80/100-17 | 53P | TUBELESS | |
| 80/100-18 | 54P | TUBELESS | |
| 100/90-17 | 55P | TUBELESS | |
| 100/90-18 | 56P | TUBELESS | |



Block Tread with Tie Bars –
Improved grip, better stability
& longer life



Multi-Radius Crown Design –
Smoother cornering and better
manoeuvrability



Even Pressure Distribution –
Uniform wear and smoother
ride quality



**High Abrasion & Cut-Crack
Resistant Compound** – Longer
tyre life in all weather





GRIPSTER

M/C REAR

TYRE SIZES

| | | | |
|---------|-----|-----|-----------|
| 2.50-16 | 6PR | 41L | TUBE TYPE |
| 2.75-18 | 6PR | 48P | TUBE TYPE |
| 3.00-18 | 6PR | 52P | TUBE TYPE |



Block Tread with Tie Bars –
Better stability, reduced tread
movement, longer life



Flatter crown-
Improved road contact, mileage
& handling



**High Abrasion & Cut-Crack
Resistant Compound** –
Longer tyre life in all weather



Even Pressure Distribution –
Uniform wear and smoother
ride quality





TUFFSTER

M/C REAR

TYRE SIZES

| | | | |
|---------|-----|-----|-----------|
| 3.00-17 | 6PR | 50P | TUBE TYPE |
| 3.00-18 | 6PR | 52P | TUBE TYPE |



Rugged tread blocks

for superior on & off road capability with better grip.



Deeper tread depth

for improved mileage



High Abrasion & Cut-Crack Resistant Compound

Longer tyre life in all weather



Even Pressure Distribution

Uniform wear and smoother ride quality





RUFFSTER

M/C REAR

TYRE SIZES

| | | | |
|-----------|-----|----------|----------------------|
| 2.75-18 | 6PR | 48P | TUBE TYPE / TUBELESS |
| 3.00-17 | 6PR | 50P | TUBE TYPE / TUBELESS |
| 3.00-18 | 6PR | 52P | TUBE TYPE / TUBELESS |
| 80/100-17 | 53P | TUBELESS | |
| 80/100-18 | 54P | TUBELESS | |



Block Tread with Tie Bars –
Better stability, reduced tread
movement, longer life



Flatter crown-
Improved road contact, mileage
& handling



**High Abrasion & Cut-Crack
Resistant Compound** –
Longer tyre life in all weather



Even Pressure Distribution –
Uniform wear and smoother
ride quality





ECO GRIP R1

M/C REAR

TYRE SIZES

80/100-17

53P

TUBELESS



Directional block tread -
Improved dry/wet grip & smoother ride



Optimised Crown Radius -
Stable straight-line riding and
predictable handling



Deeper Tread Depth -
Improved mileage over tyre life



**High Abrasion & Cut-Crack
Resistant Compound -**
Longer tyre life in all weather





ECO GRIP R2

M/C REAR

TYRE SIZES

80/100-18 54P TUBELESS



Directional block tread -
Improved dry /wet grip & smoother ride



Optimised Crown Radius -
Stable straight-line riding and
predictable handling



Deeper Tread Depth -
Improved mileage over tyre life



**High Abrasion & Cut-Crack
Resistant Compound** -
Longer tyre life in all weather





ECO GRIP R3

M/C REAR

TYRE SIZES

120/80-17 61P TUBELESS



Large directional block tread with sipes-
Better road bite & grip, better on/off road capability



Optimised tread grooves with tie bars-
Even pressure distribution, better ride quality
& even tread wear



Deeper Tread Depth -
Improved mileage over tyre life



**High Abrasion & Cut-Crack
Resistant Compound -**
Longer tyre life in all weather





ECO GRIP R4

M/C REAR

TYRE SIZES

| | | |
|-----------|-----|----------|
| 110/90-16 | 59P | TUBELESS |
| 120/80-18 | 62P | TUBELESS |



Large directional block tread with sipes-
Better road bite & grip, better on/off road capability.



Optimised tread grooves with tie bars-
Even pressure distribution, better ride quality & even tread wear.



Deeper Tread Depth -
Improved mileage over tyre life



High Abrasion & Cut-Crack Resistant Compound -
Longer tyre life in all weather





ARC XL

M/C REAR

TYRE SIZES

110/80-17 57P TUBELESS



Directional block tread with sipes-
Improved grip, better stability, longer life



Multi-Radius Crown Design –
Smoother cornering and better manoeuvrability



High Abrasion & Cut-Crack Resistant Compound –
Longer tyre life in all weather



SCOOTER





PULS-E

SCOOTER / EV

TYRE SIZES

3.00-10 4PR 42J TUBELESS



Directional Tread with Water Channels – Improved wet grip and safer braking in rain



Optimised Crown Radius – Stable straight-line riding and predictable handling



Low Rolling Resistance Compound – Better fuel efficiency / EV range



High Abrasion & Cut-Crack Resistant Compound – Longer tyre life in all weather





ARC

SCOOTER / EV

TYRE SIZES

| | | |
|-----------|-----|----------|
| 90/100-10 | 53J | TUBELESS |
| 90/90-12 | 54J | TUBELESS |



Directional block tread with sipes-
Improved grip, better stability, longer life



Multi-Radius Crown Design -
Smoother cornering and better manoeuvrability



High Abrasion & Cut-Crack Resistant Compound -
Longer tyre life in all weather





SENS-E

SCOOTER / EV

TYRE SIZES

| | | |
|-----------|-----|----------|
| 90/100-10 | 53J | TUBELESS |
| 90/90-12 | 54J | TUBELESS |



Computative geometrical tread design –
Excellent dry/wet grip, better ride quality



Optimised Crown Radius –
Stable straight-line riding and
predictable handling



Low Rolling Resistance Compound –
Better fuel efficiency / EV range



**High Abrasion & Cut-Crack
Resistant Compound** – Longer
tyre life in all weather





RUFFSTER

SCOOTER / EV

TYRE SIZES

| | | |
|-----------|-----|----------|
| 90/100-10 | 53J | TUBELESS |
| 90/90-12 | 54J | TUBELESS |



Block tread with tie bars-

Better stability, reduced tread movement, longer



Optimised Crown Radius –

Stable straight-line riding and predictable handling



Low Rolling Resistance Compound –

Better fuel efficiency / EV range



High Abrasion & Cut-Crack Resistant Compound – Longer tyre life in all weather





ARCXL

SCOOTER / EV

TYRE SIZES

| | | |
|-----------|-----|----------|
| 100/80-12 | 56L | TUBELESS |
| 110/80-12 | 61L | TUBELESS |
| 120/70-10 | 54L | TUBELESS |



Directional block tread with sipes-
Improved grip, better stability, longer life



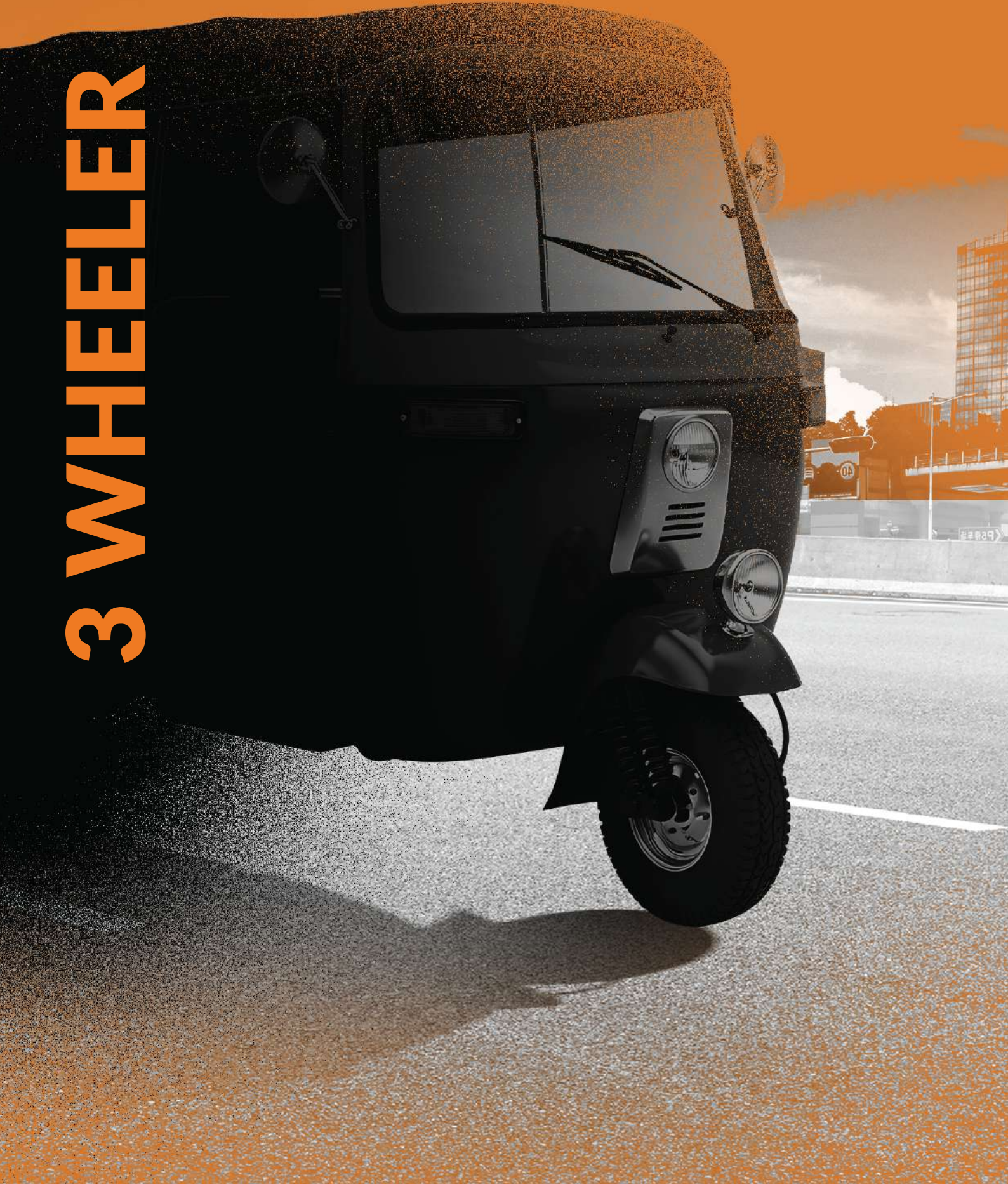
Multi-Radius Crown Design –
Smoother cornering and better manoeuvrability



High Abrasion & Cut-Crack Resistant Compound –
Longer tyre life in all weather



3 WHEELER





DRIVE-E

E-RICKSHAW / E-LOADER

TYRE SIZES

| | | |
|----------|-----|---------------|
| 90/90-12 | 64B | TUBE TYPE |
| 3.75-12 | 4PR | 66E TUBE TYPE |



Flat semi-lug tread with tie bars-
Stiffer crown, improved road contact & mileage



Heavy-duty nylon carcass –
improves load carrying capability and durability



Low rolling resistance compound-
Better EV range / battery life.



High Abrasion & Cut-Crack
Resistant Compound – Longer
tyre life in all weather





GRIPSTER+

E-RICKSHAW / E-LOADER

TYRE SIZES

3.75-12

6PR

72E

TUBE TYPE / TUBELESS



Block tread with tie bars-

Better stability, improved road contact & mileage



Heavy duty multi-layer nylon carcass-

Improved load carrying capacity & durability



High Abrasion & Cut-Crack Resistant Compound -

Longer tyre life in all weather





LOADSTER

E-RICKSHAW / E-LOADER

TYRE SIZES

3.25-16 4 & 6PR 53/60E TUBE TYPE / TUBELESS



Flat semi-lug tread with tie bars -
Stiffer crown, improved road contact & mileage



Heavy-duty nylon carcass -
improves load carrying
capability and durability



Low rolling resistance compound -
Better EV range / battery life.



**High Abrasion & Cut-Crack
Resistant Compound** -
Longer tyre life in all weather



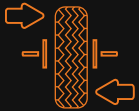


MILE RIB

3-WHEELER

TYRE SIZES

| | | | |
|---------|-----|-----|-----------|
| 4.00-8 | 6PR | 76F | TUBE TYPE |
| 4.00-10 | 6PR | 79F | TUBE TYPE |



Rib tread design – ensures straight-line stability and uniform wear under continuous load



Heavy-duty nylon carcass – improves load carrying capability and durability



Even Pressure Distribution – Uniform wear and smoother ride quality



High Abrasion & Cut-Crack Resistant Compound – Longer tyre life in all weather





MILE SL

3-WHEELER

TYRE SIZES

4.00-8 6PR 76F TUBE TYPE



Flat semi-lug tread with tie bars -
Stiffer crown, improved road contact & mileage



Heavy-duty nylon carcass -
improves load carrying
capability and durability



Low rolling resistance compound -
Better EV range / battery life.



**High Abrasion & Cut-Crack
Resistant Compound** -
Longer tyre life in all weather





MILE LUG

3-WHEELER

TYRE SIZES

4.00-8 6PR 76F TUBE TYPE



Flat lug tread

Stiffer crown, more load capability & mileage



Heavy-duty nylon carcass –

improves load carrying capability and durability



Low rolling resistance compound –

Better EV range / battery life.



High Abrasion & Cut-Crack Resistant Compound –

Longer tyre life in all weather



WARRANTY COVERAGE



Manufacturing Defect Warranty

- **2-Wheeler Tyres** : 5 years from date of purchase
- **3-Wheeler Tyres** : 4 years from date of purchase

If the purchase invoice is unavailable, the warranty period will be calculated from the tyre manufacturing date.



Unconditional Warranty

- **2-Wheeler Tyres** : 36 months or 60% tread wear, whichever occurs earlier
 - **3-Wheeler Tyres** : 12 months or 50% tread wear, whichever occurs earlier
- Applicable from date of purchase or manufacturing date (if invoice is unavailable).



ADJUSTMENT & SETTLEMENT

- All warranty adjustments are processed on a pro-rata basis, based on remaining tread depth.
- Tyres identified with a defect within the first 10% of tread wear are eligible for FOC replacement.
- If a tube is supplied along with the tyre, tube adjustment will follow the same pro-rata basis as the tyre.



WARRANTY EXCLUSIONS

- The following are not covered under unconditional warranty:
- Nail cuts, punctures, run-flat usage, or damage arising from them
- Any form of physical damage to the tyre or vehicle
- Damage caused due to misuse, improper fitment, or abnormal operating conditions

WARRANTY COVERAGE



CLAIM PROCESS

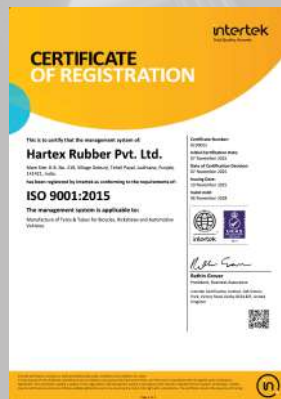
- All warranty claims must be registered and processed exclusively through the Company App.
- Dealers are required to register tyre details at the time of sale to ensure smooth claim processing.
- Adjusted defect tyres must be returned to the Company for technical analysis.
- Claim processing time typically ranges between 24–48 hours.
- Any discrepancies related to a processed claim must be raised within 7 days.
- The Company is not liable for any alternate arrangements during claim processing.



IMPORTANT NOTES

Channel partners are responsible for providing accurate warranty information to customers at the time of sale. Any misinformation conveyed at the point of sale will not be entertained by the Company. The Company's decision on all warranty claims shall be final and binding.

CERTIFICATION





Scan for e-catalogue

Hartex Rubber Private Limited

Corporate Office

8-2-472, GVC Square, 4th Floor, Road No. 1,
Banjara Hills, Hyderabad 500 034,
Telangana, India.

Hyderabad Factory

Plot No. 106, Sri Venkateshwara Co-op Industrial Estate IDA Bollaram,
(Sangareddy Dist.) Hyderabad 502 325, Telangana, India.

Ludhiana Factory

HB 219, Village Doburji, Ludhiana 141421, Punjab, India.



+91 9346616814



www.hartex.in



info@hartex.in